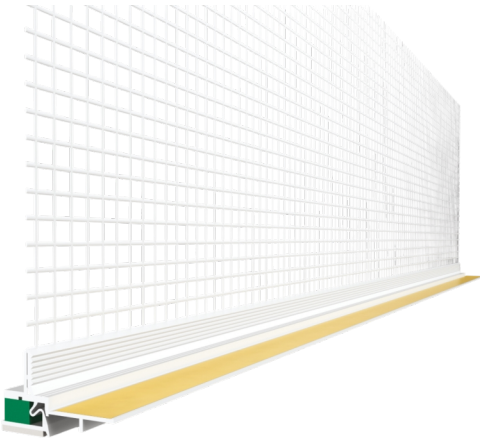


TECHNICAL SHEET 05.06.10-EN



JUBIZOL 3D window reveal profile

3D window reveal profile

1. Description, usability

JUBIZOL WINDOW PROFILE 3D with protective lath and fiberglass mesh allows for 3-dimensional movements between window and door frames and between plasters in the External Thermal Insulation Composite System (ETICS).

Features:

- Allows for a 3-directional expansion joint between the thermal insulation system and the window or door frame
- Prevents the plaster from detaching from the window or door frame
- Protects window and door frames and glass from mechanical damage or dirt during the application of mortar or plaster
- Prevents hairline cracks
- Prevents cold penetration
- Eliminates the need for additional joint filling
- Ideal for narrow window or door frames
- Aesthetically refined detail
- Available in various colors: white, brown (RAL 8024), gray (RAL 7005), light gray (RAL 7047), ivory (RAL 1015), anthracite (RAL 7016)

2. Packaging

- JUBIZOL WINDOW PROFILE 3D (piece 2.6 m, carton 156 m)

3. Technical data

Product name	JUBIZOL WINDOW PROFILE 3D
Material	PVC-UV and alkali-resistant Glass fiber mesh in accordance with ETAG 004 PUR strip Double-sided adhesive PE foam strip with closed cells

Batten length	2600 mm
Size of foam tape (width x height)	9 mm x 1 mm
Mesh width	125 mm
Visible expansion capability	3D
Mesh attachment method	Fastening by welding (completely inert in contact with alkaline and temperature changes)

4. Installation

First, remove the protective film from the window frame and clean any dirt or grease. Cut the slat to the desired length using special corner cutters, remove the protective film from the foam tape, and then stick it onto the frame. You can adhere the slap to the window or door frame before or after installing insulation on the door or window jambs. The laths in the window corners are connected at a 45° angle. After removing the cover tape, cover the adhesive layer with protective film. This film protects the window or door from smudging and damage during the installation of the thermal insulation system. Next, apply base coat to the insulation layer and embed the reinforcement mesh JUBIZOL WINDOW PROFILE 3D into it. Remove any excess base coat outside the mesh and smooth it with a trowel. After applying the finishing coat, fold and break off the removable part of the profile and remove it along with the protective film on the window.

For a cross-section of the profile, see picture 001 in the appendix.

5. Instructions for safe use of the product

Safety handling instructions, first aid measures, fire protection measures, measures in case of accidental releases, special storage instructions, required personal protective equipment, waste handling instructions, special transport requirements, and other legally prescribed information are provided in the product's safety data sheet. In addition to these instructions, it is necessary to follow the guidelines and regulations for safety in construction, facade work, and painting when installing the product.

6. Storage, transportation conditions and durability

Packed in cardboard boxes. Store in a dry and covered area at a temperature of +5°C to +40°C. Transport in a horizontal position. Shelf life when stored in the original sealed and undamaged packaging: at least months.

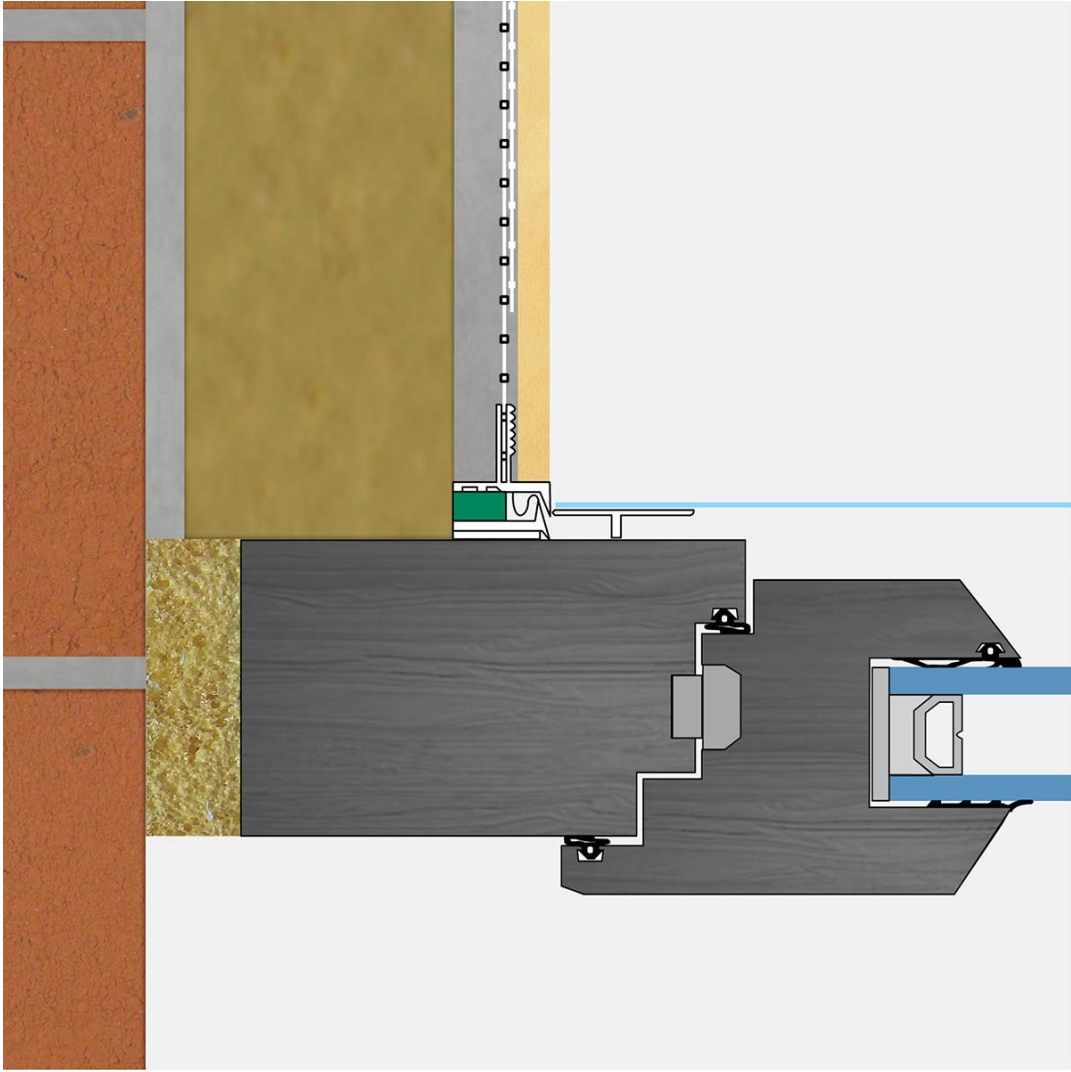
7. Other information

The technical instructions in this brochure are provided on the basis of JUB's experience and are given as a guideline for achieving the optimum results. JUB cannot accept any responsibility for the damage caused by incorrect selection of a product, incorrect use or unprofessional work.

Safety measures: Follow the instructions on the safety data sheet of the product.

This technical sheet supplements and replaces all preceding editions. JUB reserves the right to change and supplement data in the future.

Designation and date of issue: TDS 156/26-pek, 22.06.2026



001